

# HYGIENIC FITTINGS

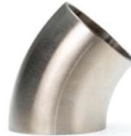


## 90 DEGREE BEND



1/2" O/D - 4" O/D  
1.5MM WALL  
304/316  
DULL POLISH

## 45 DEGREE BEND



1/2" O/D - 4" O/D  
1.5MM WALL  
304/316  
DULL POLISH

## PULLED EQUAL TEE



1/2" O/D - 4" O/D  
1.5MM WALL  
304/316  
DULL POLISH

## BRANCH EQUAL TEE



1/2" O/D - 4" O/D  
1.5MM WALL  
304/316  
DULL POLISH

## CONCENTRIC REDUCERS



1" x 3/4" O/D - 4" x 3" O/D  
1.5MM WALL  
304/316  
DULL POLISH

## ECCENTRIC REDUCERS



3/4" x 1/2" O/D - 4" x 3" O/D  
1.5MM WALL  
304/316  
DULL POLISH

## PIPE CLIP (RUBBER INSERT)



1/2" O/D - 4" O/D  
304/316  
DULL POLISH

## PIPE CLIP (SADDLE TYPE)



1/2" O/D - 4" O/D  
304/316  
DULL POLISH

## PIPE CLIP (HINGED TYPE)



1/2" O/D - 4" O/D  
304/316  
DULL POLISH

## RJT COMPLETE UNION



1/2" O/D - 4" O/D  
1.5MM WALL  
304/316  
DULL POLISH  
(PARTS AVAILABLE INDIVIDUALLY)

## TRI-CLAMP ASSEMBLY (COMPLETE)



1/2" O/D - 4" O/D  
1.5MM WALL  
304/316  
DULL POLISH  
(PARTS AVAILABLE INDIVIDUALLY)

**DIMENSIONS  
TO  
BS4825**