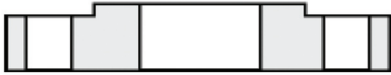


# FLANGES

## BS EN 1092-1 RAISED FACE SLIP ON



1/2" NB - 24" NB  
304L/316L  
PN6/PN10/PN16/PN25/PN40  
PN16 AVAILABLE O/D / METRIC

## BS EN 1092-1 RAISED FACE BLIND



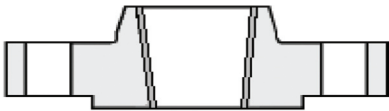
1/2" NB - 24" NB  
304L/316L  
PN6/PN10/PN16/PN25/PN40

## BS EN 1092-1 RAISED FACE WELD NECK



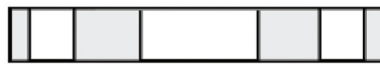
1/2" NB - 12" NB  
304L/316L  
PN6/PN10/PN16/PN25/PN40  
SCH5S/SCH10S/SCH40S/SCH80S

## BS EN 1092-1 SCREWED BSP'T



1/2" NB - 6" NB  
316L  
PN16

## BS EN 1092-1 FLAT FACED REDUCED THICKNESS



1" - 12"  
304L/316L  
PN16 BORED O/D / METRIC

## BS EN 1092-1 FLAT FACED REDUCED THICKNESS BLIND



1" - 12"  
304L/316L  
PN16

## BS10 FLAT FACED SLIP ON



1" NB - 12" NB  
304L/316L  
TABLE 'D' / TABLE 'E' / TABLE 'F'  
TABLE 'E' AVAILABLE BORED O/D

## BS10 FLAT FACED BLIND



1" NB - 12" NB  
304L/316L  
TABLE 'D' / TABLE 'E' / TABLE 'F'

## BS10 FLAT FACED SCREWED BSP'T



1/2" NB - 4" NB  
316L  
TABLE 'E' SCREWED BSP'T

# FLANGES

## ANSI B16.5 RAISED FACE SLIP ON



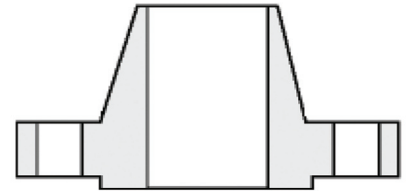
1/2" NB - 24" NB  
304L/316L  
150LB/300LB  
(OTHER RATINGS AVAILABLE)

## ANSI B16.5 RAISED FACE BLIND



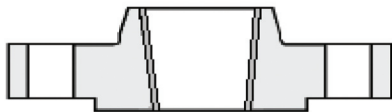
1/2" NB - 24" NB  
304L/316L  
150LB/300LB  
(OTHER RATINGS AVAILABLE)

## ANSI B16.5 RAISED FACE WELD NECK



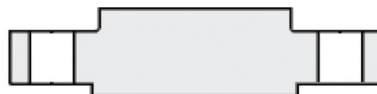
1/2" NB - 24" NB  
304L/316L  
150LB/300LB  
SCH5S/SCH10S/SCH40S/SCH80S  
(OTHER RATINGS AVAILABLE)

## ANSI B16.5 SCREWED



1/2" NB - 2" NB  
316L  
150LB  
SCREWED BSP/T/NPT  
(OTHER RATINGS AVAILABLE)

## ANSI B16.5 RAISED FACE BOSSED BLIND



1/2" NB - 2" NB  
304L/316L  
150LB/300LB  
(OTHER RATINGS AVAILABLE)

## ANSI B16.5 RAISED FACE SOCKET WELD



1/2" NB - 2" NB  
304L/316L  
150LB SCHED 40S  
(OTHER RATINGS AVAILABLE)

## ANSI B16.5 FLAT FACED REDUCED THICKNESS



1" - 12"  
304L/316L  
150LB BORED O/D / METRIC

## ANSI B16.5 FLAT FACED REDUCED THICKNESS BLIND



1" - 12"  
304L/316L  
150LB

# DIMENSIONS TO ANSI B16.5